

SEPTEMBER 2021

inside *Scoop*



CALIFORNIA LANDSCAPE CONTRACTORS ASSOCIATION
EAST BAY CHAPTER

In this issue

The CLCA East Bay Chapter Beautification Awards was a night to remember. Members were recognized for the beautiful work they have been doing for the past 2 years. Look inside for a complete list of winners!

On the cover: Clinger Residence by Garden Lights Landscape Development, winner of the Sweepstakes Installation Award at the 2021 CLCA East Bay Chapter Beautification Awards.

CERTIFIED ISUZU LANDSCAPE

Truck Sales • Service • Parts



WWW.CALIFORNIATRUCKCENTERS.COM/ISUZU
CALL US: (510) 250-7300
8200 BALDWIN ST. OAKLAND, CA 94621



GOLDEN GATE
TRUCK
CENTER

CHARLES CATES
Outside Sales Representative

6901 Bradshaw Road
Sacramento, CA 95829

M: (916) 212-3942

CCates@everde.com
www.everde.com



L.H. VOSS MATERIALS INC. Landscape Centers

Nyoka Corley

Territory Sales Manager

Email: nyoka.corley@gmail.com

Cell: 510.773.7063

MAIN OFFICE:
2445 Vista Del Monte
Concord CA 94520
FAX: 925.676.7976
Acct: 925.676.7910

AFFILIATED STORES:
Clarks U Save Rockery
Hayward 510.471.0755
San Leandro 510.357.5220

Mt. Diablo Landscape Ctr
Concord 925.687.2930
Pittsburg 925.778.3123
L.H. Voss Materials Inc.
Dublin 925.560.9920



Your success. Our heritage.

- **Grower and broker since 1869**
- **Serving landscape professionals**
- **For one plant to an entire installation**
- **Delivery right to your job site**
- **Subscribe to our email Newsletter**



Pacific Nurseries

www.pacificnurseries.com | 650.755.2330

~KURAPIA~

NEW

DROUGHT TOLERANT GROUND COVER SOD

- A turfgrass alternative changing the industry
- No need to sacrifice lawns to save water on landscape
- Grows low to the ground rarely exceeding 1"
- Dark green year round, and if left un-mowed produces small white flowers May-November

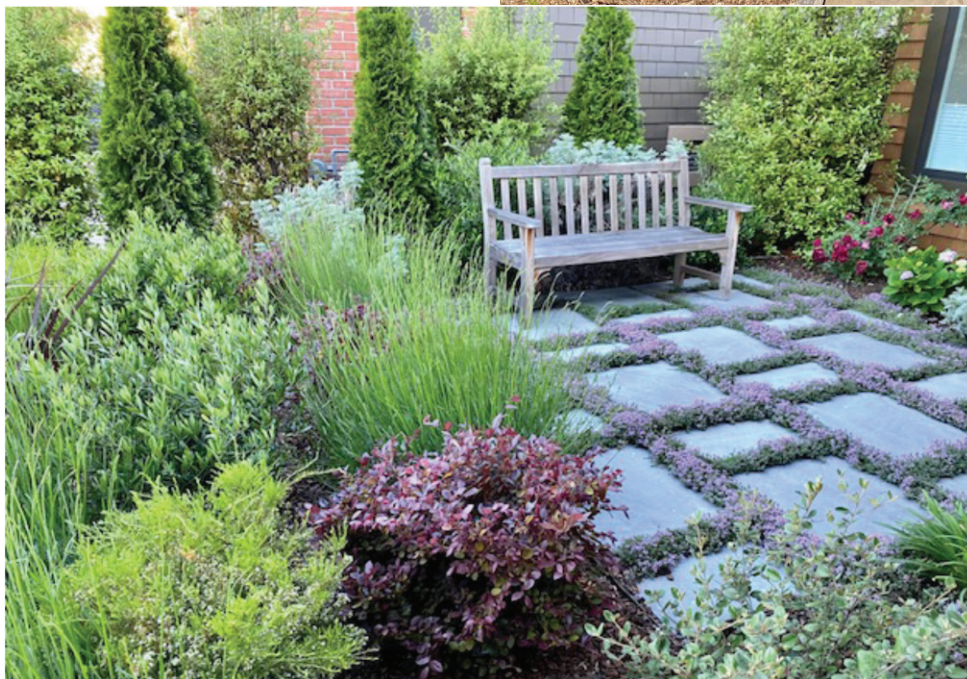
**WEST COAST
TURF**

Ask us about
other water saving
turfgrasses, too!

westcoastturf.com
888/893-8873

East Bay Chapter Beautification Awards

Congratulations to those who took home awards at the CLCA East Bay Chapter Beautification Awards program. A big thank you to our judges -- Andrew Johnson, AJ De Lopez, and Cameron Goheen -- and to everyone who entered their fantastic projects this year.



Sweepstakes Installation

Sponsored by: Imperial Irrigation Supply
Garden Lights Landscape Development
Clinger Residence (top)

Sweepstakes Maintenance

Sponsored by: CLCA Insurance Solutions
Suma Landscaping
Forsgard Residence (middle)

Judges Award

Sponsored by: Ewing Irrigation
Garden Lights Landscape Development
Lind Residence (at right)

Middle right: Steve Lambert, Garden Lights Landscape Development and Paul Wong, Imperial Sprinkler Supply





Bailey Residence by Suma Landscaping, Petite Residential Installation



Specht Residence by Past the Gate, Large Residential Installation



Mathis Residence by Suma Landscaping, Custom Residential Installation



Devlin Residence by Suma Landscaping, Small Design/Build Installation



Arnold Residence by Past the Gate, Large Design/Build Installation

Petite Residential Install

Sponsored by: L.H. Voss Materials
Achievement: Suma Landscaping
Project Name: Bailey Residence

Large Residential Install

Sponsored by: Golden Gate Truck Center
Achievement: Robert S. Cruikshank Landscape Contractor
Project Name: Arimo
Sponsored by: Devil Mountain Nursery
First Place: Past the Gate
Project Name: Specht Residence

Custom Residential Install

Sponsored by: The Urban Farmer Store
First Place: Suma Landscaping
Project Name: Mathis Residence

Small Design /Build Install

Sponsored by: Bee Green Recycling and Supply
Achievement: Tree Sculpture Group, Terra Landscape
Project Name: Arcadia Park
Sponsored by: SiteOne Landscape Supply
First Place: Suma Landscaping
Project Name: Devlin Residence



Blanchard Residence by Garden Lights Landscape Development, Medium Design/Build Installation

Medium Design /Build

Sponsored by: RainBird
Achievement: Calvin C. Craig
Project Name: Lind New Front Lawn
First Place: Garden Lights Landscape Development
Project Name: Blanchard Residence

Large Design/Build Install

Sponsored by: Delta Bluegrass Co.
Achievement: Calvin C. Craig
Project Name: Fortner Family Outdoor Retreat
First Place: Past the Gate
Project Name: Arnold Residence

Renovation Installation

Sponsored by: Vision Recycling
Achievement: Suma Landscaping
Project Name: Freeport HOA



Freeport HOA by Suma Landscaping, Renovation Installation

Special Effects Installation

Sponsored by: Hunter/FX Luminaire
First Place: Garden Lights Landscape Development
Project Name: Lind Residence

Medium Residential Maintenance

Sponsored by: Horizon
First Place: Suma Landscaping
Project Name: Adams Residence

Large Residential Maintenance

Sponsored by: Stop Waste
Achievement: Allied Landscape
Project Name: Echo Ridge OA
First Place: Allied Landscape
Project Name: Waterline Place
Sponsored by: CalStone
First Place: Allied Landscape
Project Name: Wallis Ranch

Small Commercial Maintenance

Sponsored by: Watersavers Irrigation
First Place: Tree Sculpture Group, Terra Landscape
Project Name: Redwood Hills



Lind Residence by Garden Light Landscape Development, Special Effects Installation



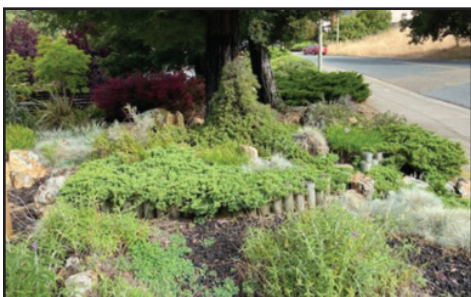
Adams Residence by Suma Landscaping, Medium Residential Maintenance



Waterline Place by Allied Landscape, Large Residential Maintenance



Wallis Ranch by Allied Landscape, Large Residential Maintenance



Redwood Hills by Tree Sculpture Group, Terra Landscape, Small Commercial Maintenance

www.clcaeastbay.org



Eugene Spoor (Suma Landscaping Inc.) Kim Titus (The Urban Farmer Store)



Charlene Spoor (Suma Landscaping Inc.) Claude Schoeder (Horizon)



Loren McIroin (Allied Landscape) Paul Wong (Imperial Sprinkler Supply)



Rich Moore (Garden Lights Landscape Development) Lamar Hughes (Rain Bird)



Georgette Salah (Terra Landscape) Paul Wong (Imperial Sprinkler Supply)



Damion Rosby (Golden Gate Truck Center) and Greg Wrenn (Past the Gate)



Calvin Craig (Calvin Craig Landscaping) Lamar Hughes (Rain Bird)

CLCA East Bay Chapter Address

3130 Balfour Rd., Ste. D #215
Brentwood, CA 94513
www.clcaeastbay.org

2021 East Bay Chapter Board of Directors

IMMEDIATE PAST PRESIDENT

LEEANNA SCHOEDER (925) 584-4119

PRESIDENT

PAUL WONG (925) 518-6331
Imperial Sprinkler
paulw@imperialsprinkler.com

PRESIDENT ELECT

LOREN McIRVIN (925) 280-0161
Allied Landscape
l.mcirvin@contactallied.com

SECRETARY/TREASURER

DAVID MANLOVE (510) 898-1025
Indian Rock Landscapes
david@indianrocklandscapes.com

DIRECTOR-MEMBERSHIP

Damion Rosby (510) 632-3535
Golden Gate Truck Ctr.

DIRECTOR-EVENTS

BARRY SACHER (510) 459-9547
Rock Paper Scissors Landscape Inc.
rockpaperscissorslandscape@gmail.com

ASSOCIATE MEMBER REPRESENTATIVE

DOUGLAS ANTHONY (415) 710-7707
The Urban Farmer Store
doug@urbanfarmerstore.com

EXECUTIVE ADMINISTRATOR

LAURA LEUER (510) 207-4350
lleuer@comcast.net F (866) 260-8869

NEWSLETTER EDITOR

JERRIE BEARD (530) 621-1701
jsb@beardassociates.com

East Bay Chapter Monthly Board Meetings

Board meetings are held on the 1st Thursday of the month at 4:00 p.m. (some exceptions). Check the calendar for locations.

The CLCA East Bay Chapter newsletter is published monthly. Copy and advertising deadlines are the 10th of the month preceding publication. Materials may be mailed to: Jerrie Beard & Associates, PO Box 96, Coloma, CA 95613. Or email to: jsb@beardassociates.com. For information on advertising and rates, contact Jerrie Beard at (530) 621-1701.

CLCA State Headquarters

1491 River Park Drive, Ste. 100
Sacramento CA 95815-8899
(916) 830-2780 • (800) 448-2522
(916) 830-2788 Fax
email: hq@clca.org

2021 CLCA State Executive Board

clca.org/about/board-of-directors/

Past CLCA State Presidents from the East Bay Chapter

2018 Aaron Huxley
2017 Tim Hendricks
1996 John Redmond Jr.
1986 Roger D. Fiske
1978 Joe Tanouye

East Bay Past Chapter Presidents

2019-2020 Leeanna Schoeder
2018 Eric Santos
2017 Roxy Wolosenko
2016 Calvin Craig
2014-15 Peter Rosen
2012-13 Tim Hendricks
2011 DeeAnn Schuttish
2009-10 Nate Silin
2007-08 Barry Minor
Gregory Wrenn,
Rick Martens, CLT
Dennis Brewer
2005 Rick Martens, CLT
2003-04 Gregory Wrenn
2000-02 Rob Solomon CLT, CLP
1999 Dave Wolkenhauer, CLT
1997-98 Diane McNally
1996 Dan Berger, CLT
1995 Craig Hutchinson
1994 Steve Schlitt
1993 Matt Schiller
1992 Robert Battinich
1991 John Redmond
1990 Jim Kwiat
1989 Thomas Raeth
1988 John Nishizawa
1986-87 Thomas A. Adan
1985 David Burnley
1984 Don Young
1983 David Gutru
1982 Joe Tanouye
1981 J. Warren Thurston
1979 Peter Rumore
1978 Pat Nichols
1977 Joe Korematsu
1976 Chuck Rich

East Bay Chapter Life Members

Congratulations and Thank You to the following CLCA East Bay Chapter Members for their continued support for over 25 years.

Roger Fiske Ken Gerlack
Jeffrey Jones Joe Korematsu
George Sunayama Jack Rydman
Thomas Raeth Kevin Berndt

CLCA East Bay Chapter Contractor's Honor Code

The CLCA East Bay Chapter exists to support Contractor's AND their employees. To successfully meet this objective, and encourage the involvement of all levels of the landscape industry, the Board of Directors is committed to supporting the following Contractor's Honor Code:
The solicitation, recruitment of, or attempt to hire another Contractor's employees while attending any CLCA function is strictly prohibited.

CLCA MEMBER ADVANTAGE

Be sure to get your fill of savings



Help manage your fleet and control costs with **Flyers Energy Fuel Program**.

- Save on fuel purchases at more than 4,000 gas stations in California.
- Monitor refills.
- Set limits on fuel purchases.
- Streamline reporting.



(530) 863-4560

clca.org/flyers



LANDSCAPE CONTRACTORS INSURANCE SERVICES, INC.
Member owned. Service focused.

1835 N. Fine Ave.
Fresno, CA 93727

DEBRA SPENCER

ACCOUNT EXECUTIVE,
NORTHERN CALIFORNIA

CA LIC # 0755906

dspencer@lcisinc.com
www.lcisinc.com

P (800) 628-8735 Ext. 554
C (559) 285-4702
F (800) 440-2378

Specialized Insurance & Business Services for Members of the Green Industry



PIONEERS OF SUSTAINABLE TURF

Jeff Henninger
(925) 698-8295

www.deltabluegrass.com

C-27 752734

Member Standings

30+ Year Members

Joe Korematsu (1956)
Roger Fiske (1962)
Cagwin & Dorward (1963)
Ken Gerlack (1966)
Lafayette Tree & LS (1967)
Horizon (1970)
Ewing Irrigation (1973)
BrightView Tree Co. (1973)
SiteOne Landscape Supply (1974)
Professional LS Mngmt (1980)
Delta Bluegrass Co. (1980)
Landscape Care Co. (1985)
LandPlan's LS Inc. (1982)
Village Nurseries (1983)
L.H. Voss Materials (1987)
P.J. McNamara (1987)
Suma Landscaping Inc. (1988)
Berndt Landscape & Garden Maint (1988)
Trimacs Maint. & LS Const, Inc. (1988)
Diamond K Supply Ltd. (1990)

Tony Franchetto (1991)

Life Members

George Sunayama, Joe Korematsu, Roger Fiske, Paul Schultz, Ken Gerlack, William Rogers, Thomas Raeth, Dan Berger, Robert Battinich, Kevin Berndt, Stephen Lambert, Calvin Craig

25 Year Members

George Schandelmier, G.S. Landscaping

16 Year Members

Robert Battinich

12 Year Members

Susan Friedman, Landscape Architect

10 Year Members

Brian Takehara, New Image Landscape Co.

9 Year Members

Laura Leuer

6 Year Members

Lance Perry, CLCA Insurance Solutions

5 Year Members

Paul Colon, Ewing Irrigation

David Manlove, Indian Rock Landscapes

2 Year Members

Michelle Zepeda, Frank & Grossman LS

Josh Hall, William Smedley, Tri-West

Tractor

1 Year Members

Carlos Barajas, New Image Landscape Co.

Russell Takehara, New Image Landscape

Dan Dachauer, Tree Sculpture Group

Kevin Jackson, Tree Sculpture Group

Tieka Romonoff, Tree Sculpture Group

Tom Wilhite, Tree Sculpture Group

The East Bay Chapter Thanks Our 2021 Partners for Success

Gold - \$1500

- Four Dinner Tickets to the Beautification Awards Banquet and sponsorship of a Judges or Sweepstakes Award plaque.
- Four Tickets to the Baseball Event (includes tailgate party).
- Free Admission to All Dinner Meetings during the year.



Silver - \$1000

- Three Dinner Tickets to the Beautification Awards Banquet and Sponsorship of an Award plaque for one of the award categories.
- Three Tickets to the Baseball Event (includes tailgate party).
- Free Admission to Three Dinner Meetings of your choice during the year.



Bronze - \$750

- Two Dinner Tickets to Beautification Awards Banquet and Sponsorship of an Award plaque for one category.
- Two Tickets to the Baseball Event (includes tailgate party).
- Free Admission to Two Dinner Meetings of your choice during the year.



All Partners Receive

- Company Name recognition in the chapter's monthly newsletter, Inside Scoop and the mid-monthly electronic newsletter E-Scoop. Company event promotion in electronic newsletter, E-Scoop.
- Company Name recognition at every event, logo on table-tents or event fliers, Company logo on the chapter website and event announcements.

For information, or to become a sponsor, call Laura Leuer at (510) 207-4350.



Todd Gerrow
(916) 216-2859
tgerrow@agsod.com

12750 Guard Rd.
Lodi CA 95242
(800) 588-6882
www.agsod.com

Growers of Quality Bluegrass, Fescue & Bermuda Sod



Buy better, buy different, buy Horizon.

Horizon has the products you need, when you need them—all under one roof.



IRRIGATION



OUTDOOR LIVING & LANDSCAPE LIGHTING

Step outside your normal scope of work to grow your business and keep up with the competition.

Low voltage lighting, outdoor kitchens, synthetic turf & hardscaping are all great opportunities for you to improve your profitability and expand your service offering.

And that's just what Horizon's Outdoor Living products can help you do.



LANDSCAPE



EQUIPMENT



MORE THAN A STORE.

Visit us online, or stop in to your local branch to experience the Horizon difference today.

Irrigation
Outdoor Living
Landscape
Equipment



@horizondistributors | HorizonDistributors

800.PVC.TURF | HorizonOnline.com